

11YPG Series - High Torque Stepper Gearmotor



FEATURES

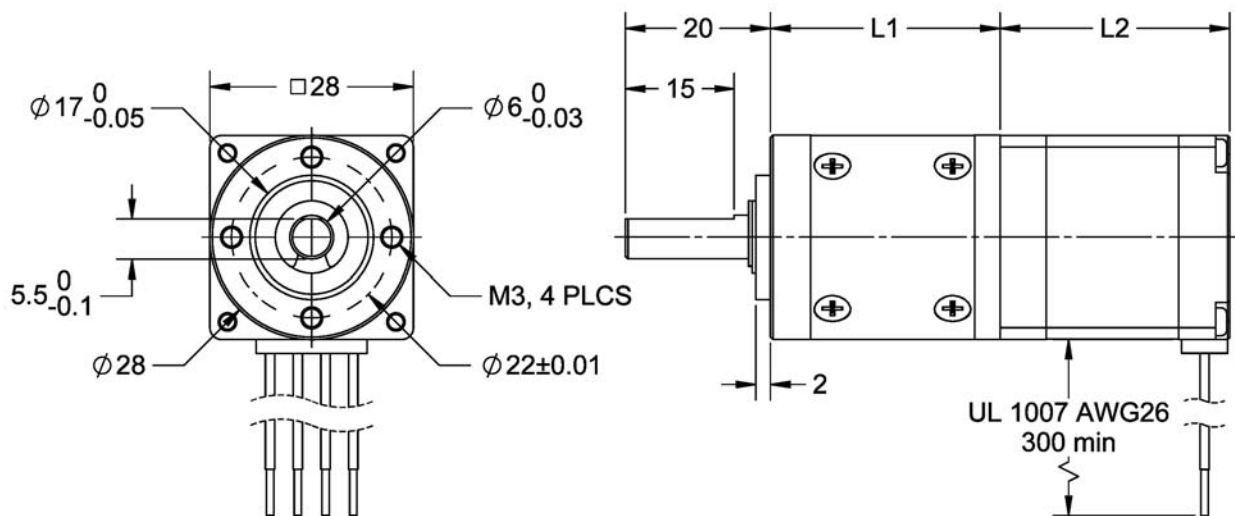
- **NEMA Size 11 Integrated Gearmotor**
- **High-Torque Stepper Motor**
- **Economy Planetary Gearbox**
- **High Torque - Up to 2116 oz-in**
- **Gear Ratios: 3.7 to 720**
- **Can be Customized for**
 - **Winding Currents**
 - **Shaft Options**
 - **Cables and Connectors**
- **CE Certified and RoHS Compliant**



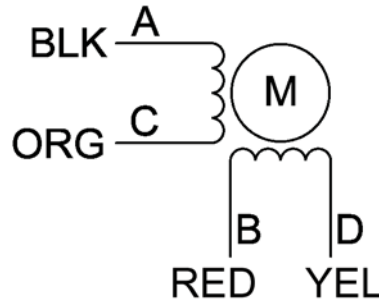
DESCRIPTION

The 11YPG Series Gearmotor incorporates a high-torque stepper motor and an economic planetary gearbox to offer you an exceptional value. This compact package can deliver torque up to 2116 oz-in. Gear ratios are available from 3.7 to 720. This gearmotor is ideal for applications that require high torque in a small package. The gearmotor can be customized to perfectly match your voltage, current, and maximum operating speed for maximum flexibility.

DIMENSIONS



L010580



- Speed of the output shaft (after gearbox) = (Motor Speed)/(Gear Ratio)
- Torque of the output shaft (after gearbox) = (Motor Torque/) X (Gear Ratio)
- Rotor Inertia of the output (shaft after gearbox) = (Rotor Motor Inertia) X (Gear Ratio)²
- Create a complete Model Number by selecting a motor from Table 1 and Gearbox from Table 2.

11YPG302S - LW4 - R100

Model #	NEMA Size	Motor Specs								
		Bipolar Torque (oz-in)	Bipolar Current (A)	Bipolar Voltage (V)	Bipolar Resistance (ohm)	Bipolar Inductance (mH)	Rotor Inertia (oz-in-sec ²)	# of Lead Wires	Weight (lbs)	"L2" Length (mm)
11YPG102S-LW4	11	8.3	0.67	3.92	4.0	3.40	0.00013	4	0.24	31.8
11YPG202S-LW4	11	13.2	0.67	4.76	5.0	4.90	0.00017	4	0.31	44.5
11YPG302S-LW4	11	16.7	0.67	6.44	7.0	7.20	0.00025	4	0.44	50.8

Gearbox Ratio (R)	3.7	5.2	14	19	27	51	71	100	139	189	264	369	516	720
Exact Reduction Ratio	3.71	5.18	13.76	19.22	26.83	51.06	71.30	99.55	138.99	189.45	264.52	369.32	515.66	719.98
Rated Torque (oz-in)	71	71	141	141	141	353	353	353	353	705	705	705	705	705
Max Torque (oz-in)	212	212	423	423	423	1058	1058	1058	1058	2116	2116	2116	2116	2116
Efficiency	90%	90%	81%	81%	81%	73%	73%	73%	73%	66%	66%	66%	66%	66%
L1 (mm)	31.5	31.5	40.0	40.0	40.0	48.5	48.5	48.5	48.5	57.5	57.5	57.5	57.5	57.5
Weight (lbs)	0.13	0.13	0.18	0.18	0.18	0.20	0.20	0.20	0.20	0.23	0.23	0.23	0.23	0.23

Note: Custom leadwires, cables, connectors, and windings are available upon request.